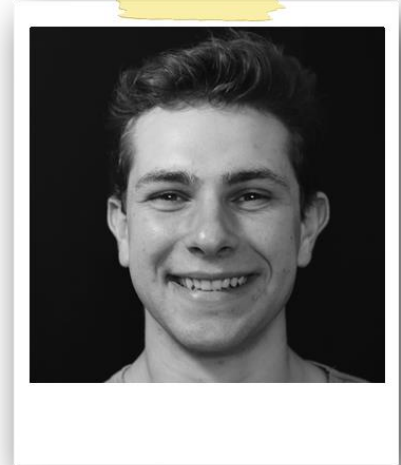


BRETT KRÜGER

FILM/TV/THEATRE/COMMERCIALS



HEIGHT: 182CM

HAIR: DARK BROWN

EYES: BROWN

LANGUAGES: ENGLISH, AFRIKAANS, DUTCH (BASIC)

ACCENTS: AFRIKAANS, BRITISH RP, COCKNEY, STANDARD AMERICAN, GERMAN, AUSTRALIAN, RUSSIAN, NEW ZEALAND, ITALIAN

SKILLS: SINGING, DANCING (BALLROOM, LATIN, CONTEMPORARY & TAP), GUITAR & PIANO, BOXING, CLIMBING, CYCLING, RUNNING, PARKOUR, SOCCER, SQUASH, SWIMMING, TENNIS

TELEVISION

TITLE	ROLE	DIRECTOR/PRODUCTION COMPANY
FRAKSIE	BARMAN	SHOWMAX
TROUKOORS	JOSH	SHOWMAX

FILM

TITLE	ROLE	DIRECTOR/PRODUCTION COMPANY
THE CONTRACT	LEAD (BRETT)	YOUTUBE
ROOT OF THE PROBLEM	LEAD (CLIVE)	YOUTUBE
MISSING	SUPPORTING (DANNY)	RIZZLE
UNDERRIPE	LEAD (DETECTIVE)	YOUTUBE

THEATRE

TITLE	ROLE	DIRECTOR/PRODUCTION COMPANY
PHYSICAL THEATRE FINALS: SUBMERGE	LEAD DANCER	STELLENBOSCH DRAMA DEPARTMENT
WANNABE KEISERS	LEAD (BETAVIUS)	PREMIERE
THE LINE	LEAD DANCER	STELLENBOSCH DRAMA DEPARTMENT

ASPOESTERELLA PANTOMIME	LEAD (BOERBOEL BURGER)	STELLENBOSCH DRAMA DEPARTMENT
CABARET ONE-MAN SHOW	ACTOR & WRITER	STELLENBOSCH DRAMA DEPARTMENT
LAB STATS: THE MUSICAL	LEAD (MR BLACK)	STELLENBOSCH DRAMA DEPARTMENT
UNWOKE: A CABARET SHOWCASE	LEAD (JOSH, RONALD)	STELLENBOSCH DRAMA DEPARTMENT
THE COFFEEHOUSE KILLER	WRITER & LEAD (THOMAS)	STELLENBOSCH DRAMA DEPARTMENT
THE PELICAN	LEAD (RYAN RICHARDS)	PREMIER
MTW SHOWCASE	SINGER & TAP DANCER	LAMTA ACADEMY
BORN TO PERFORM: SHINE	SINGER	LYRIC THEATRE JOHANNESBURG

COMMERCIALS

TITLE	ROLE	DIRECTOR/PRODUCTION COMPANY
WANNABE KEISERS	RUNWAY MODEL	
THE PELICAN	COMMERCIAL MODEL	

TRAINING

2022	BA (HONOURS) DRAMA & CABARET (CUM LAUDE) – STELLENBOSCH UNIVERSITY
2019-2021	BA DRAMA AND THEATRE STUDIES – STELLENBOSCH UNIVERSITY
2019	MUSICAL THEATRE WORKSHOP; LAMTA
2018	TALENT WORKSHOP (MODELLING, ACTING, SINGING); IPOPOP! LAS VEGAS

AWARDS

2018	GOLD MEDAL - BEST HEADSHOT (ADULT MALE) - IPOPOP!
2018	SILVER MEDAL - BEST RUNWAY MODEL (MALE) - IPOPOP!
2018	SILVER MEDAL - BEST SWIMSUIT MODEL (MALE) - IPOPOP!
2018	BRONZE MEDAL - BEST COMMERCIAL MODEL (MALE) - IPOPOP!